

FLOTEST Stations

PLASMIONIQUE Inc

FLOTEST series systems are custom configured for testing gas sensors including H₂, Chemical Vapors or Fuel Cells



Computer controlled electronic gas, vapour and liquid flow controllers, coupled to accurate humidity and temperature control and voltage/current settings provides users with an exceptional R&D tool



The advanced control System includes:

- Programming for automation of the testing process
- Real time monitoring process parameters graphically
- Time-stamped data logging, which allows users to fuse data to those from other analysis tools

Other Features Include:

Stainless Steel or Teflon Test Chambers, if required
Pumping systems for low pressure measurements
Numerous safety features, etc.

Contact us for more details



info@plasmionique.com
www.plasmionique.com

FLOTEST

Features

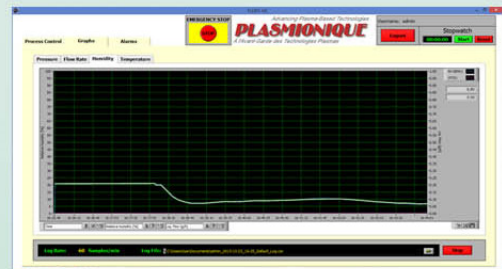
PLASMIONIQUE Inc

FLOTEST station design builds upon proven FLOCON series platform for Gas, Vapour and Liquid flow management.



User define number of electronic mass and liquid flow controllers and precision mixing of humidity or other chemical vapours offer the best R&D tool at exceptional value.

The user friendly control software allows Programming process steps, recalling recipes, displaying all operation parameters, time-stamped data logging, which permits fusing the process data with data obtained from other analytical tools.



The advanced control hardware, integrates multiple safety interlocks, including spare interlock ports. A WATCHDOG monitors computer communications, and in case of a mishap takes control and executes predefined, shut-down procedure and alerts the users. Integrated remote access capability and assistance is also a standard feature.

Contact us for more details



info@plasmionique.com
www.plasmionique.com